

## INTERMODAL INSPECTION PROGRAM

J.S. Blake: President  
N. Schuyler: Vice President

# SAFETY



## Recommended PPE:

- Hard Hat
- Enhanced Visibility Workwear
- Safety Glasses
- 6" Lace-up Steel Toe Boots





Left  
(L)



Right  
(R)

Right  
(R)



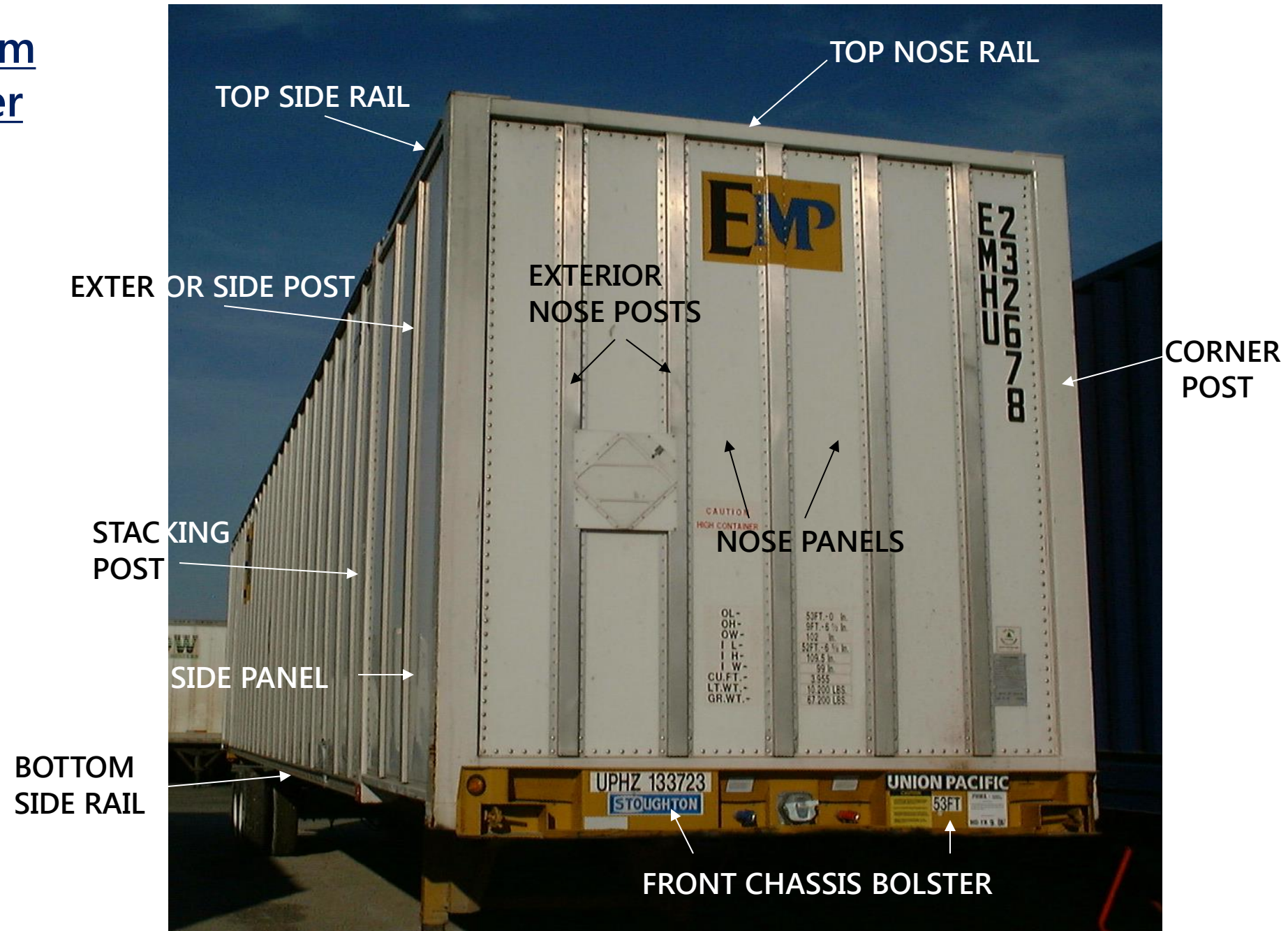
Left  
(L)



# Steel Container



Aluminum  
Container





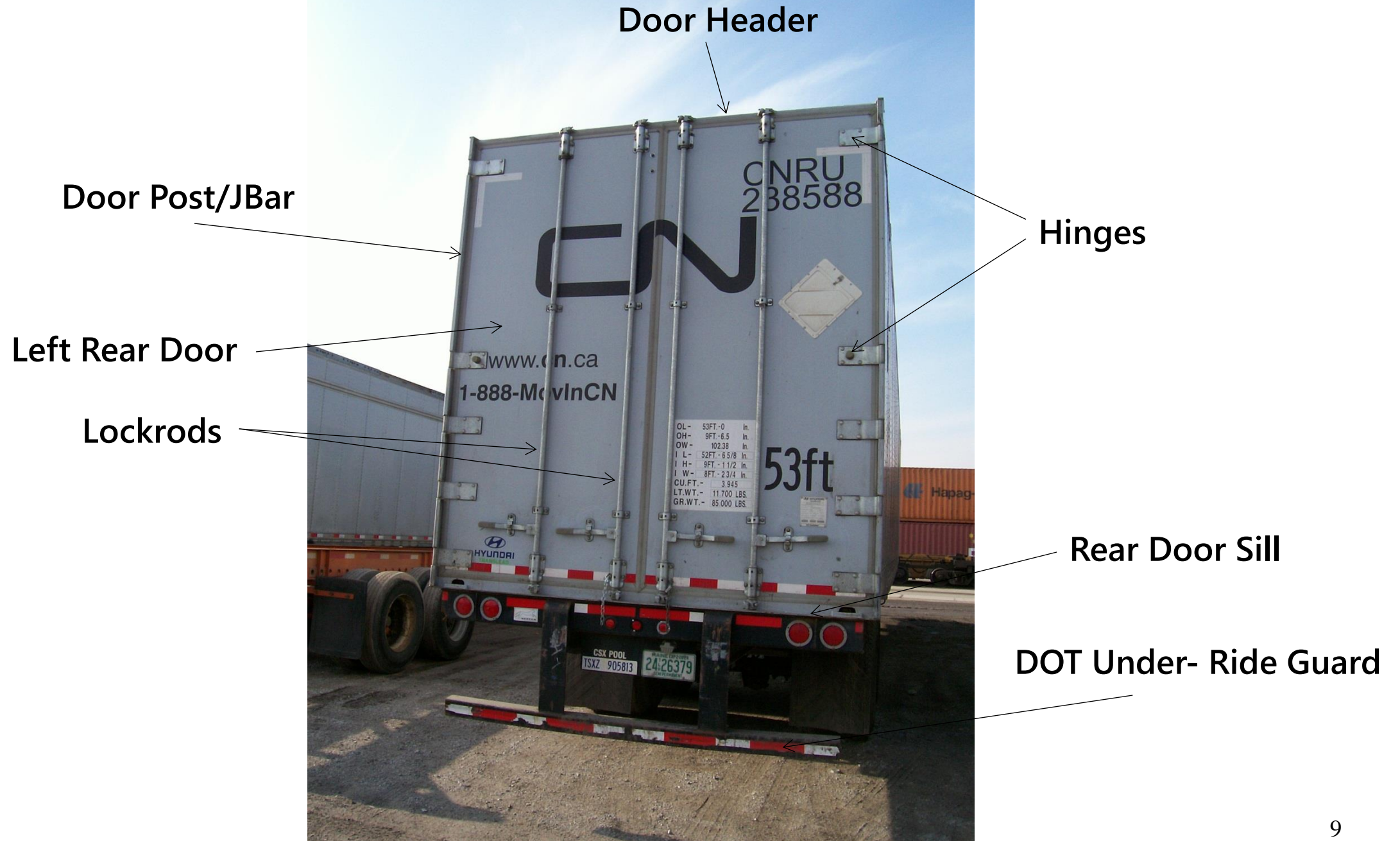


Steel boxes 45ft. and over have stacking posts

Corrugated panels









Roof sheet

Roof bows

Interior side plyliners

Scuffliner

Floor





Chassis

Outriggers

Tunnel Rail

Bottom Rail

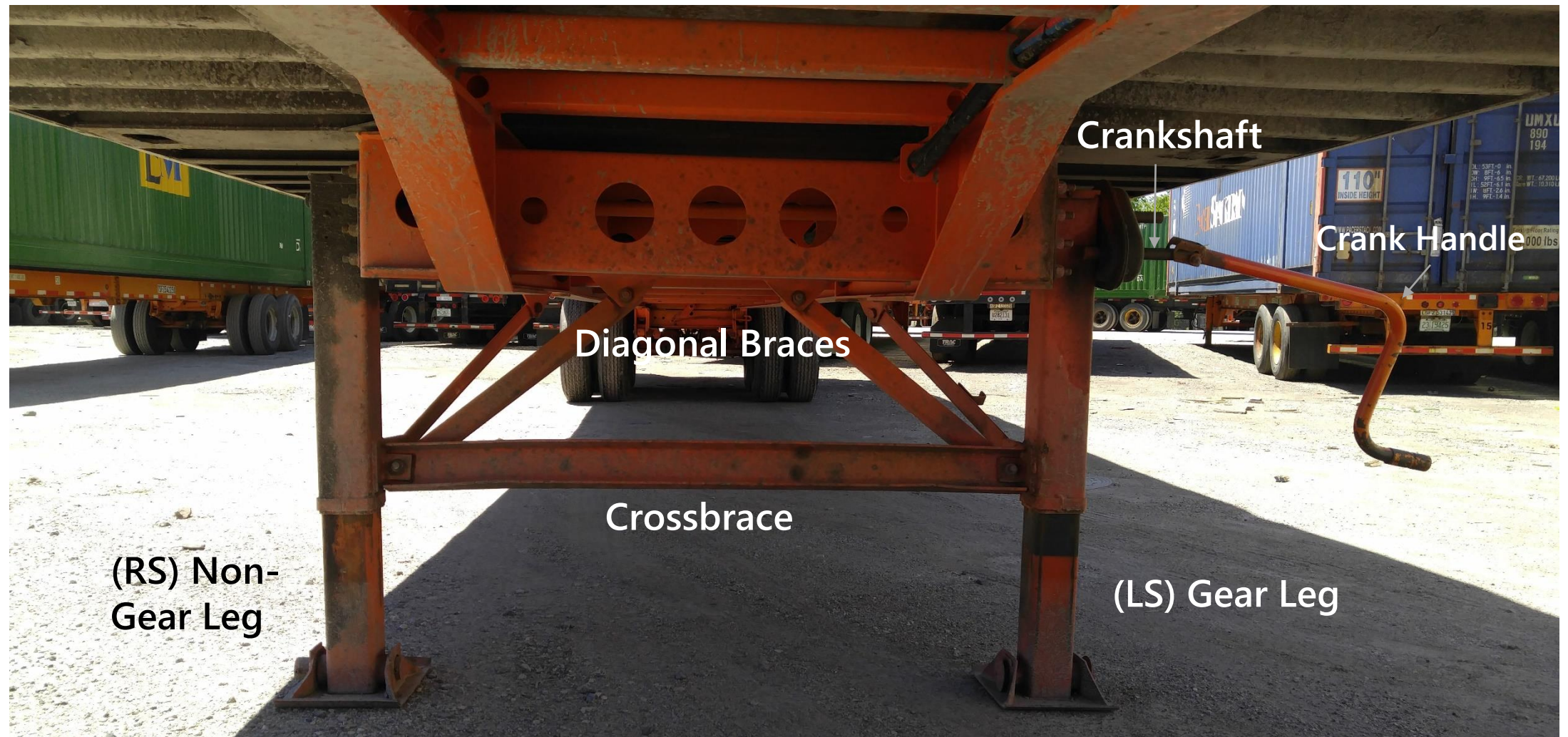


Floor

Crossmembers







Crankshaft

Crank Handle

Diagonal Braces

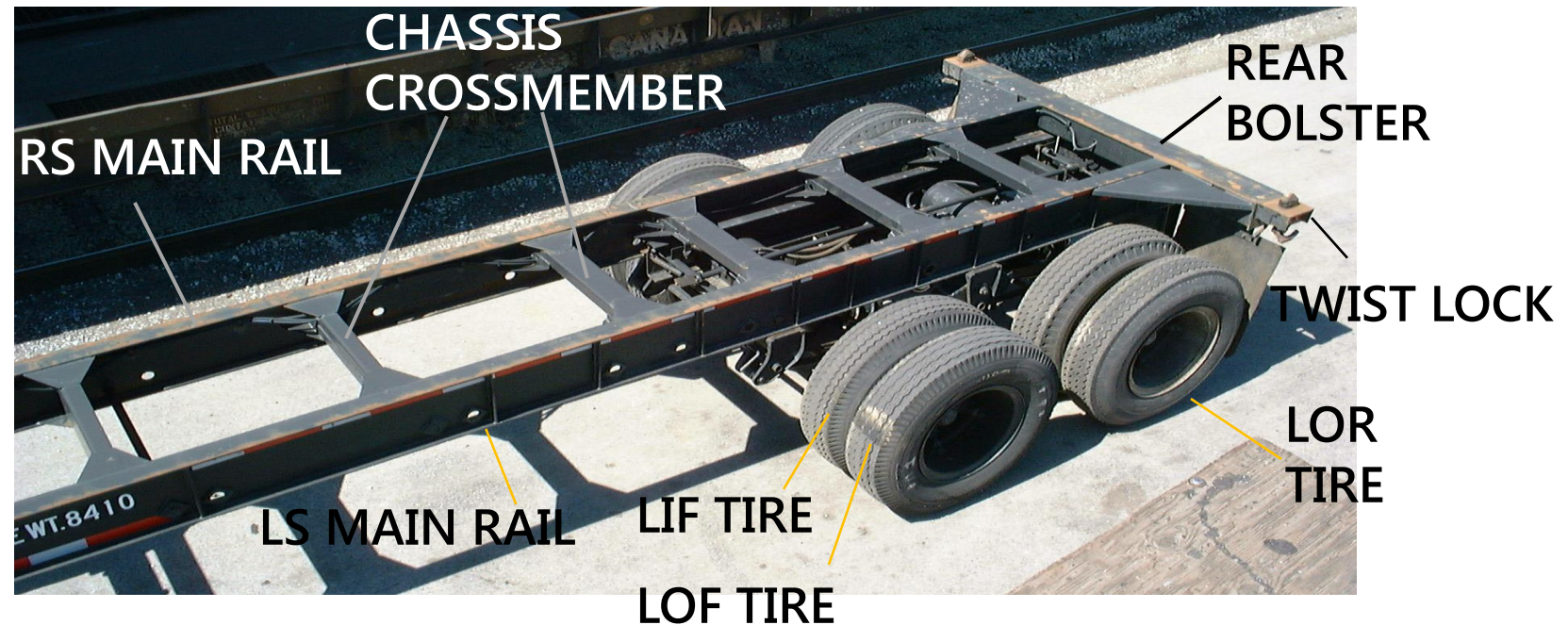
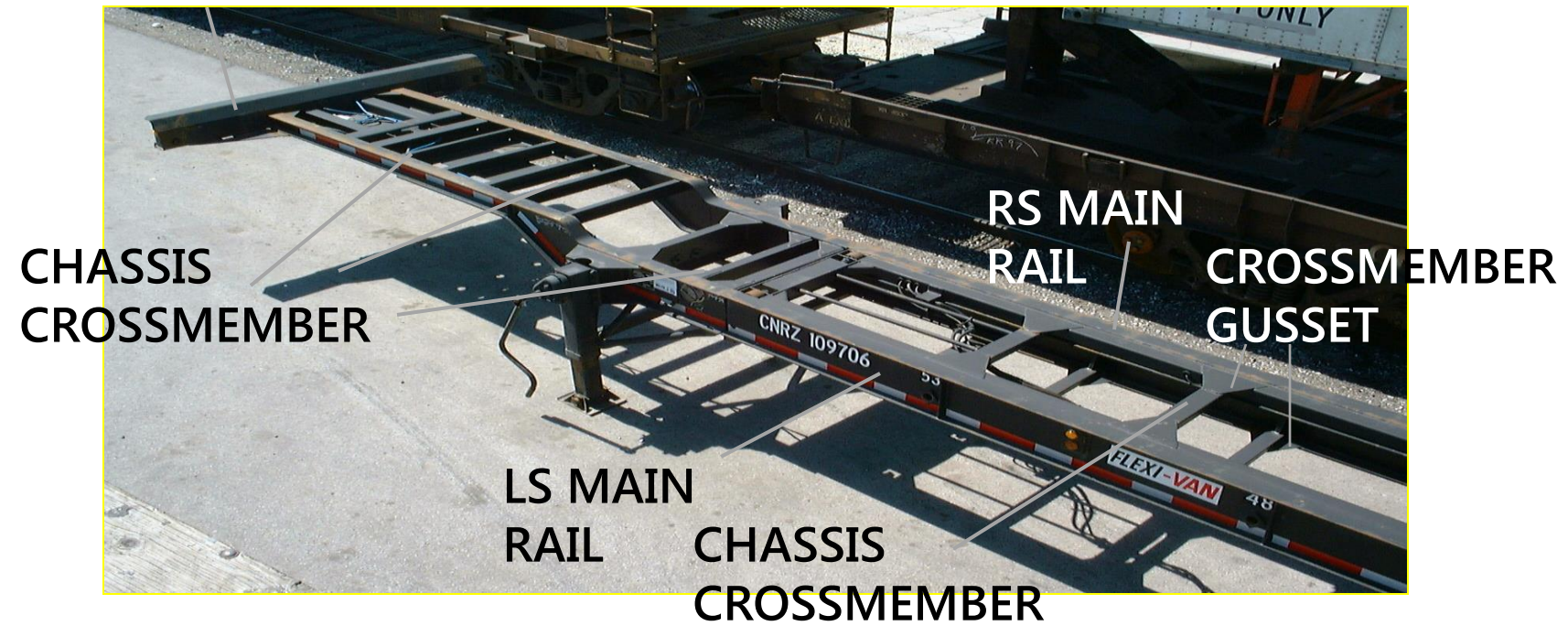
Crossbrace

(RS) Non-Gear Leg

(LS) Gear Leg

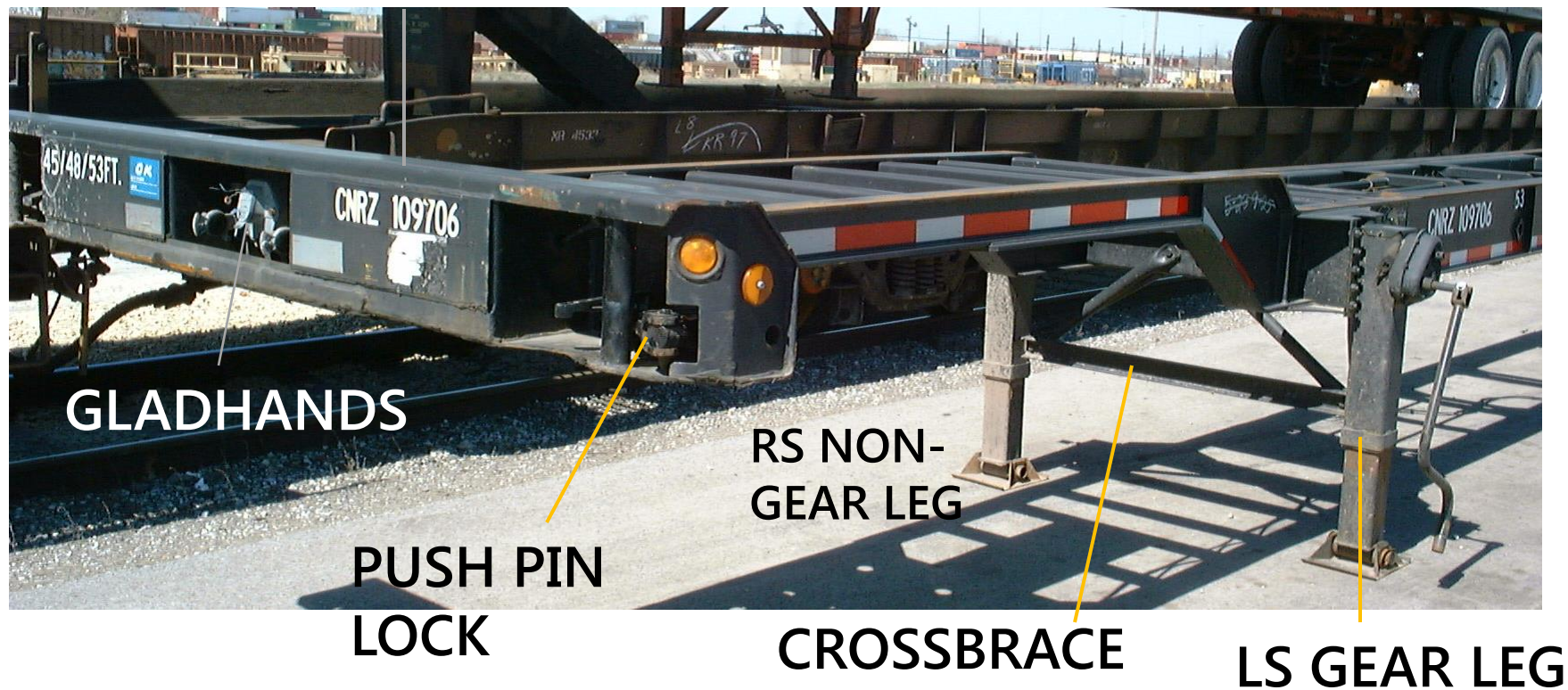


## FRONT BOLSTER

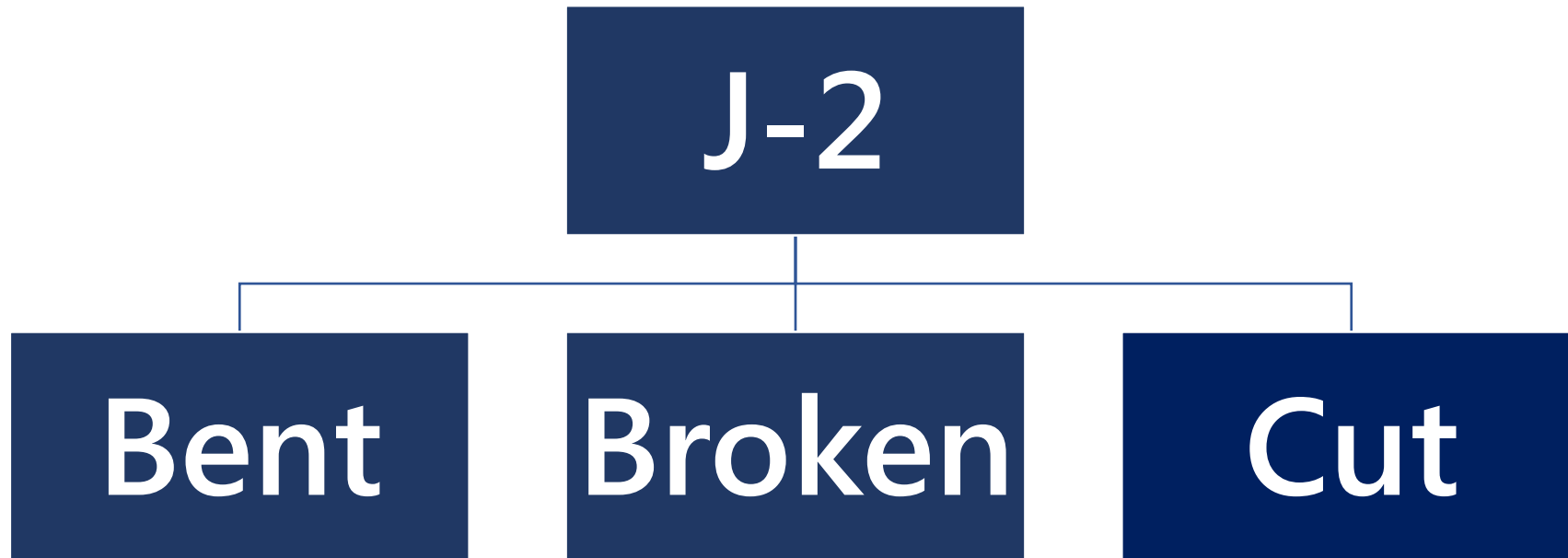




## FRONT BOLSTER



# Three Key Words for Damage





# 4 Steps to Taking Exceptions

## Location

- RSF,RSC,RSR,LSF,LSC,LSR,TF,TC,TR,F,R,INT.

## Item

- RAIL,PANEL,DOOR,POST,ETC.

## Defect

- BENT,BROKEN,CUT

## Dimensions

- ALL DIMENSIONS ARE TO BE SHOWN IN INCHES

# INSPECTION TIPS

- Start and finish at the same location
- View intermodal equipment from all angles
- Inspect underframe (crossmembers, legs, etc.)
- Inspect roof (if empty, open doors; if load, use cameras, mirrors or direct visual inspection)
- Check all tires
- Verify initials and number
- If loaded, verify seal number
- Make sure doors seal properly
- Tape and caulk usually cover cuts and should be written on J-1 as a cut
- Denote any defects





**Location: Left Side Rear (LSR)**  
**Item: Steel Side Panel**  
**Defect: Bent**  
**Dimension: 36"**



## DOT UNDER-RIDE GUARD





**Below - Bad tire - Damage**



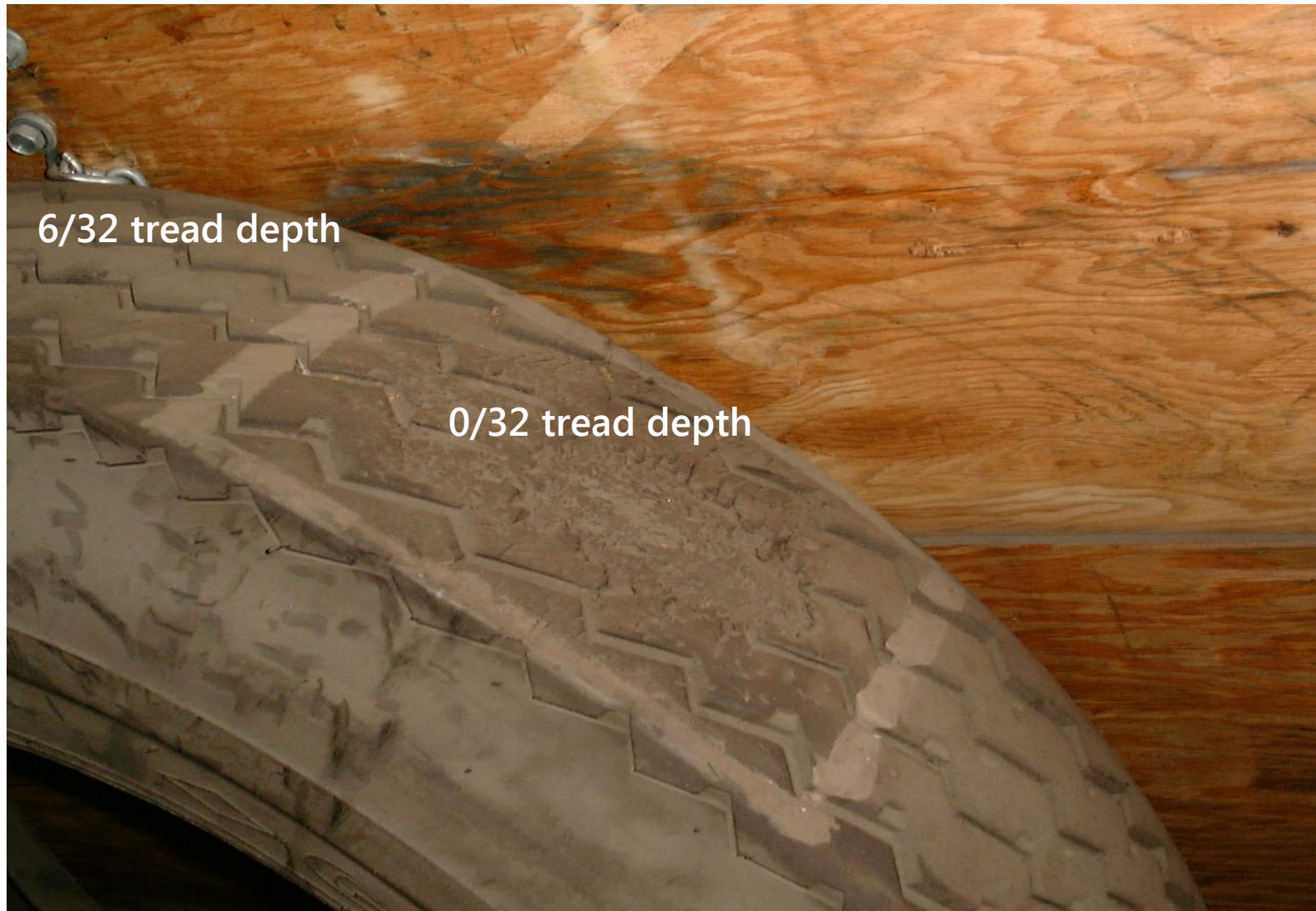
Wear Bar

Above is an example of a new tire with a flat spot at 2/32 while the remaining tread is at 12/32. You can see the wear bars (red arrow) have been penetrated. Wear bars are at 2/32 on all DOT tires. This is a slid flat tire and must be replaced.

**Below - Bad tire - Damage**



Above is an example of a flat spot below 2/32 (completely through the wear bars) with remaining area tread at 6/32. This is a slid flat damaged tire and must be replaced.



Slid Flat Tire – J2 Condition





Tire sidewall cut/punctured, exposing belt material – J2 Condition



### Run Flat Tire – J2 Condition

Damage to tires and tubes as a result of being run flat, resulting in discoloration, blistering, wrinkling, and/or casing damage being evident





Separated Cap – Owner's Responsibility



Weather Checking – Owner's Responsibility





**Worn Out Tire – Owner's Responsibility**



Channel Cracking – Owner's Responsibility



# Estimate of Repairs

Replace Noserail (Aluminum)	\$629.00
Replace Noserail (Steel)	\$370.00
Section Roof (4'x8' Aluminum)	\$400.00
Replace Roof (Steel)	\$715.00
Replace Side Panel (Aluminum)	\$336.00
Replace Side Panel (Steel)	\$684.00
Replace Top Side Rail (Aluminum)	\$1,811.00
Replace Top Side Rail (Steel)	\$2,085.00
Replace Bottom Side Rail (Aluminum)	\$1,846.00
Replace Bottom Side Rail (Steel)	\$2,085.00
Replace Doors	\$1,114.00
Replace Doors (Steel)	\$1,175.00
Replace Bias Tire	\$165.00
Replace Radial Tire	\$225.00
Replace Exterior Side Post	\$175.00
Replace DOT Under-Ride Guard	\$495.00
Replace Chassis Bolster	\$1,500.00
Replace Dolly Legs	\$953.00