



IMC
IMC Companies



FI
*Frederick
Intermodal*

Coast to coast coverage. Local market expertise.

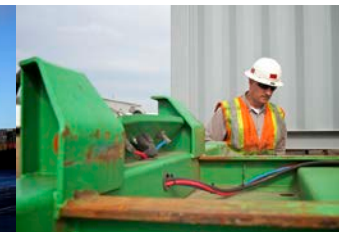
Presentation prepared for 8th Annual CCIB Seminar



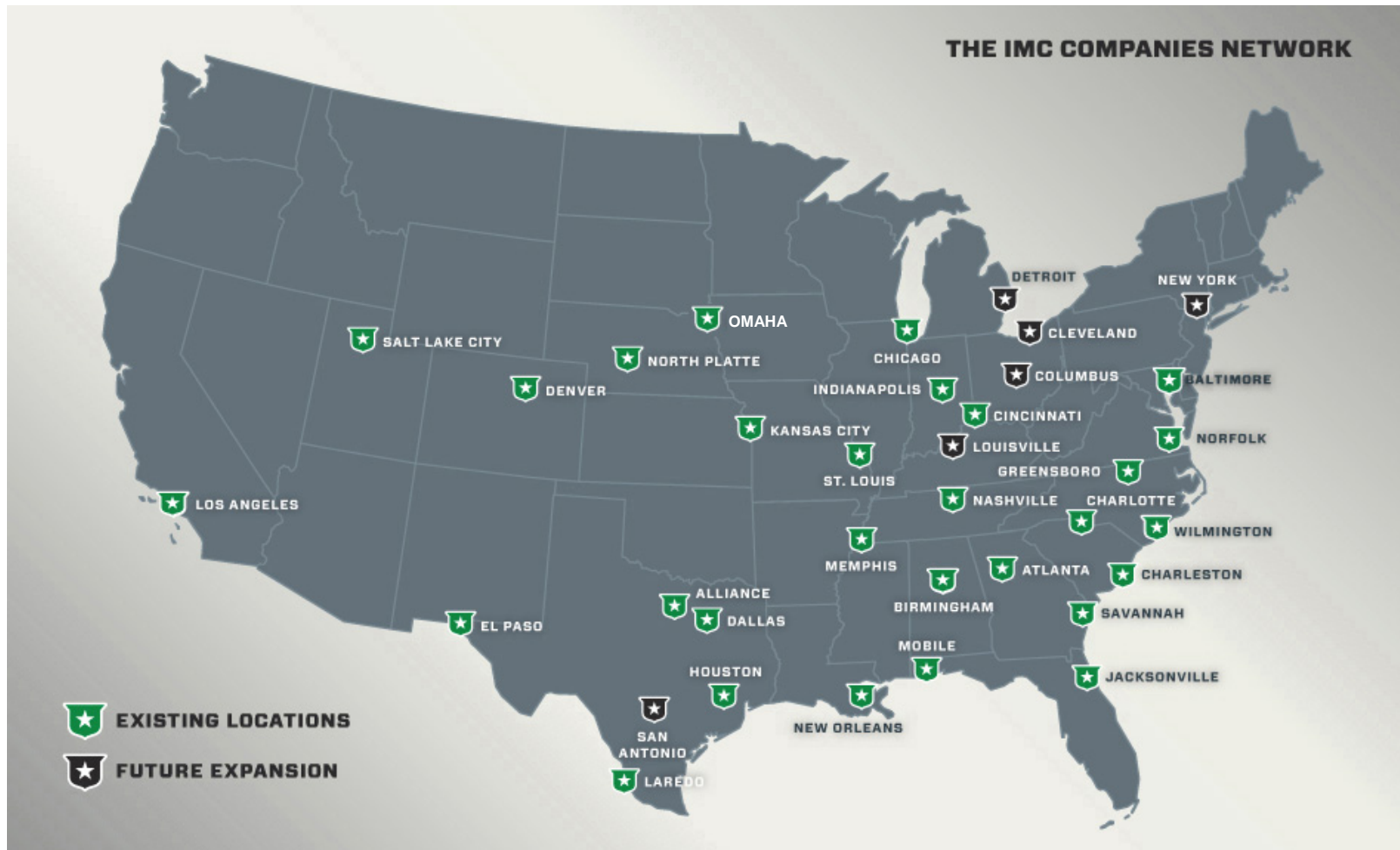
www.IMCCompanies.com

What is IMC Companies?

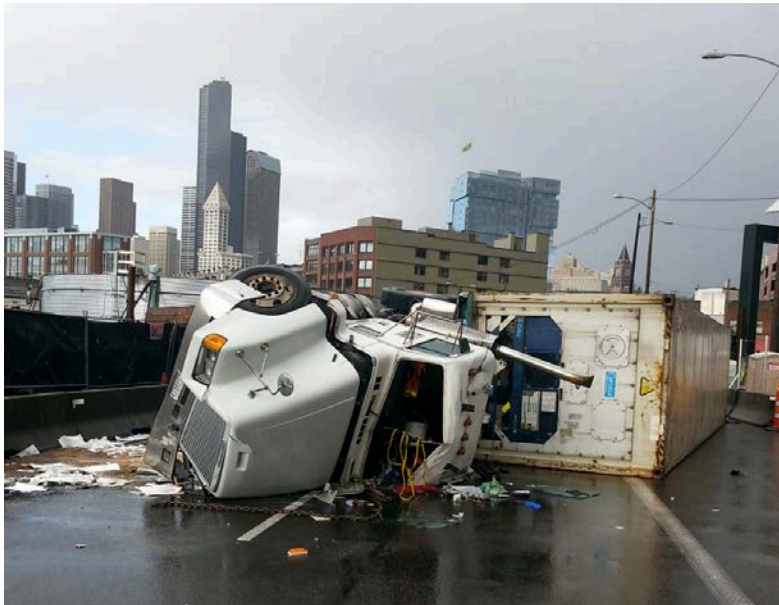
- 7 companies united in their efforts to provide exceptional intermodal service for international shipments
- Companies with local market ownership and knowledge
- A team of 1,500 employees
- Equipment including over 1,000 power units, 125 maintenance and repair vehicles and more than 6,000 containers and chassis in our container depots
- A unique resource designed to meet your specific intermodal transportation needs



Our National Footprint



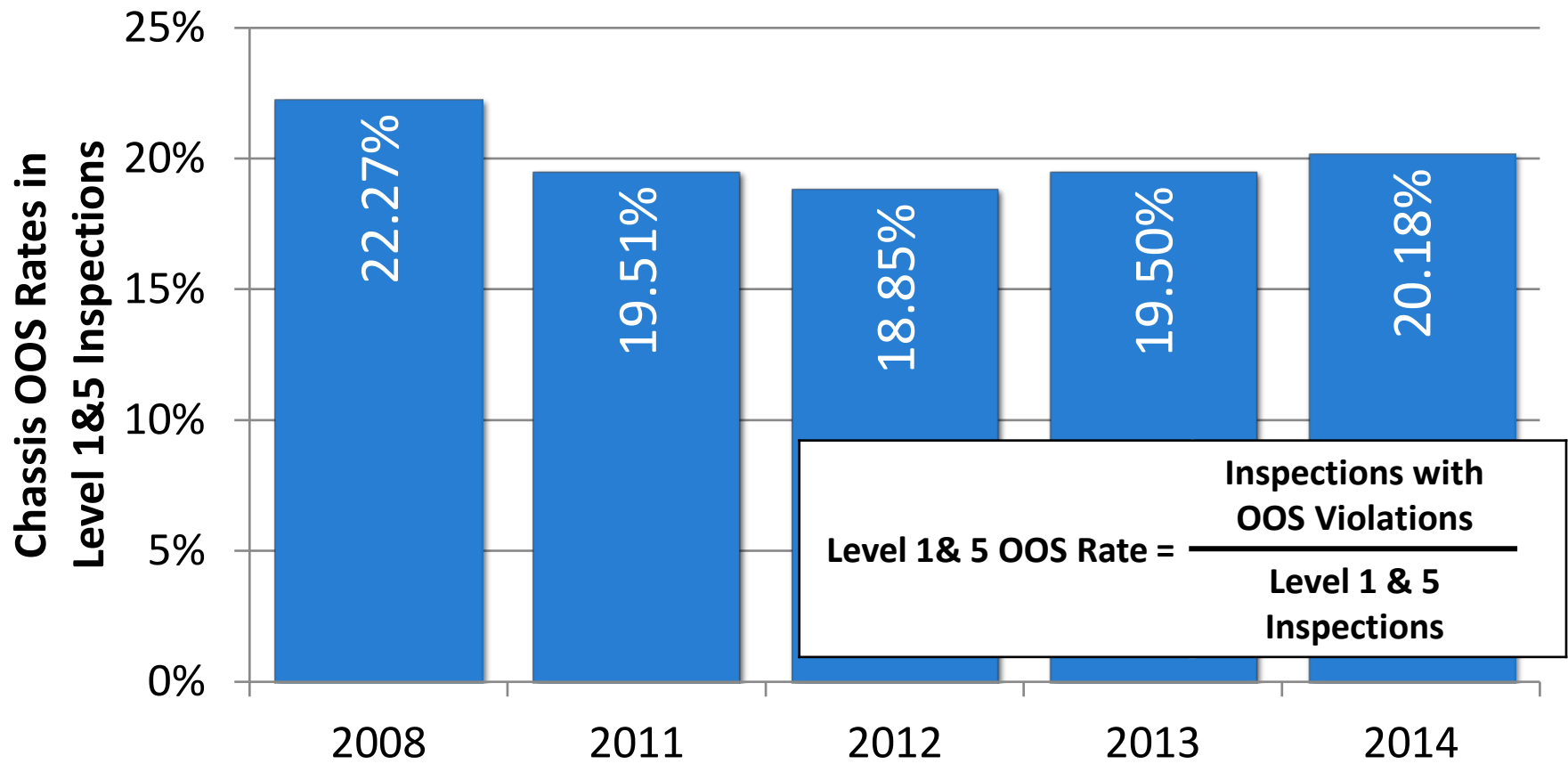
Intermodal Chassis Mechanic Qualification Standards and Training Recommendations



Chassis OOS Rates

Level 1 & Level 5 Inspections

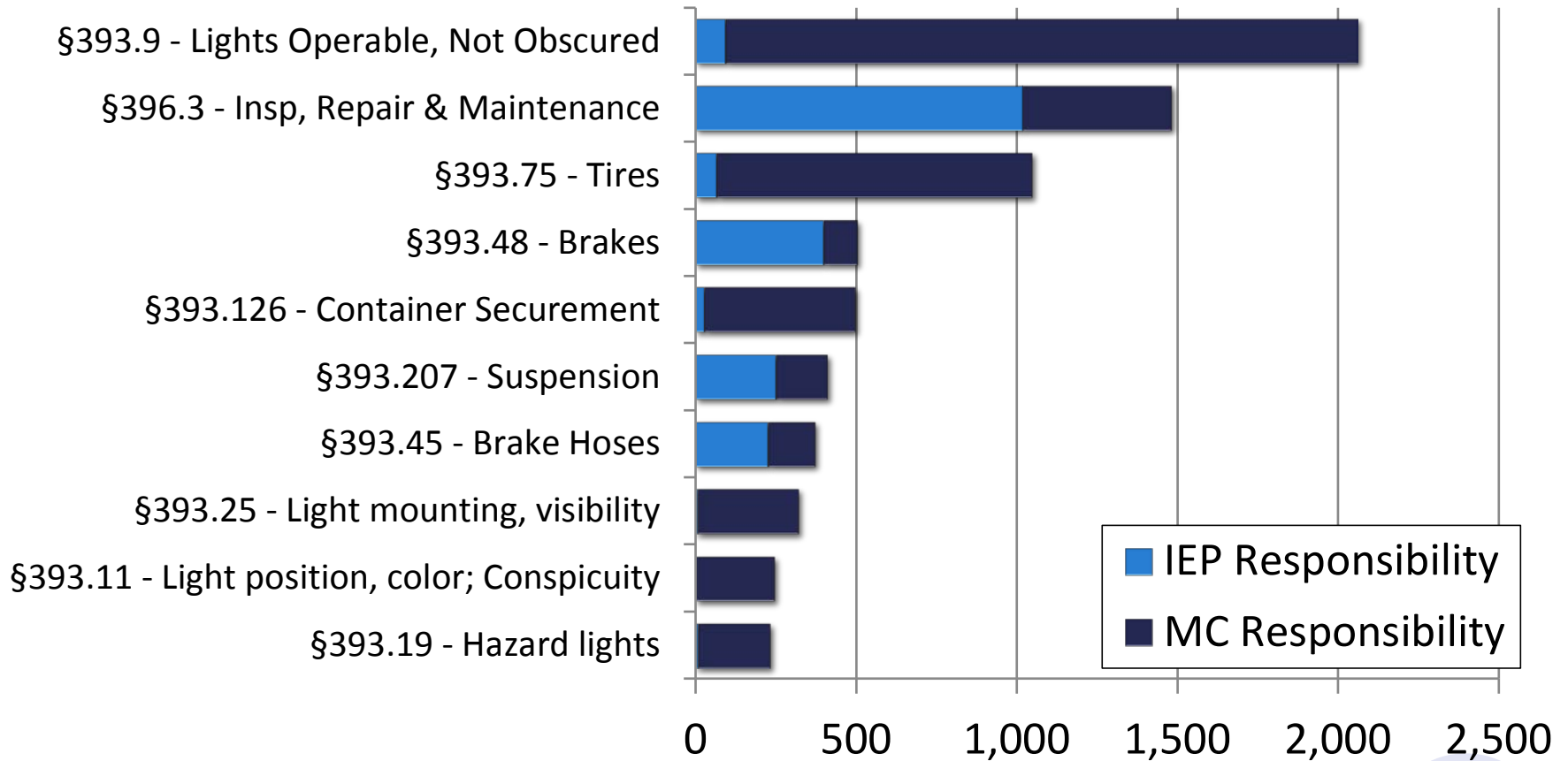
Despite increases in 2013 & 2014, Chassis OOS rates remain below 2008



Top 10 Chassis OOS Violations

Level 1 & Level 5 Inspections

Four of top 10 items are lights; two of top 10 items are brakes



Intermodal Chassis Mechanic Qualification Standards and Training Recommendations

TASKFORCE GOAL

- Provide the IANA M&R Committee with...
 - Qualifications an individual must have in order to inspect and repair intermodal chassis.
 - Training guidelines that will enable an individual to become qualified to inspect and repair intermodal chassis.
 - Recommend a certification process for intermodal chassis mechanics.

Intermodal Chassis Mechanic Qualification Standards and Training Recommendations

WORK PLAN and TIMELINE

Utilize the 9 federally defined Roadability
Component Defect (RCD)...

- 1) Brakes
- 2) Lights
- 3) Wheels
- 4) Airlines
- 5) Couplings
- 6) Frames
- 7) Bolster
- 8) Fasteners
- 9) Sliders

To create recommended qualifications and
training guidelines for intermodal chassis
mechanics

Intermodal Chassis Mechanic Qualification Standards and Training Recommendations

DESIRED OUTCOMES

- Define qualifications and training standards
- Develop qualified mechanics
- Better FMCSA inspection results
- **SAFER HIGHWAYS!!!!**

TASKFORCE MEMBERS

MEMBER TYPE	NAME	COMPANY
M&R Vendor	Tim Farrell	Frederick Intermodal
M&R Vendor	John Picnic	P&B Intermodal
M&R Vendor	Tony Noles	Atlantic Container Services
M&R Vendor	Pat Graham	Container Maintenance Corporation
M&R Vendor	Jeff Loucks	Conglobal Industries
M&R Vendor	Josh Cooley	Illinois Transport
Primary IEP	Marty Summers	Consolidated Chassis Management
Primary IEP	Dave Esposito	Direct Chassis Link Inc.
Primary IEP	Ron Smejkal	Trac Intermodal
Primary IEP	Tom Slattery	Flexi Van
Rail Road IEP	Jeremy Carwell	Norfolk Southern
Rail Road IEP	Tim Moore	CSX Corporation
Rail Road IEP	Chad Peterson	Burlington Northern Santa Fe Railway

Thank you!

Joey Frederick

281-808-2443

joeyf@frederickintermodal.com



Your success is our final destination.

